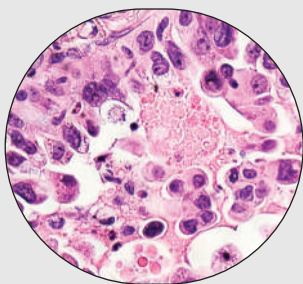
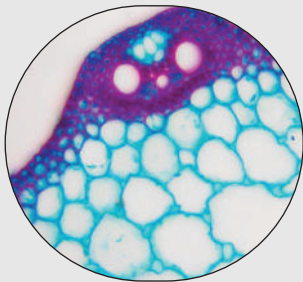


# TRINOCULAR TISSUE CULTURE MICROSCOPE

## METZ - 6000 TTCM



### SPECIFICATIONS

Magnification	40x to 400x.
Observation	Trinocular lx magnification with interpupillary and diopter adjustment.
Stand	Extra large size rectangular base, heavy & stable with transformer and electrical fitted in side.
Mechanical	Co-axial low drive, triple plate for comfortable and convenient manipulation of slide.
Focusing	Co-axial coarse & fine mechanism system with ball bearing guide ways.
Illumination	Koehler's illumination system 12V-50W Halogen Lamp.
Quadruple Nose Piece	A precision mechanism ensures the accuracy and optical alignment of the system
LWD Objectives	4x, 10x, 20x (SL) & 40x (SL). Anti fungal coated & infinity corrected.
Eye Pieces	10x paired. Extra Wide Field, Anti fungal & Anti reflected.